

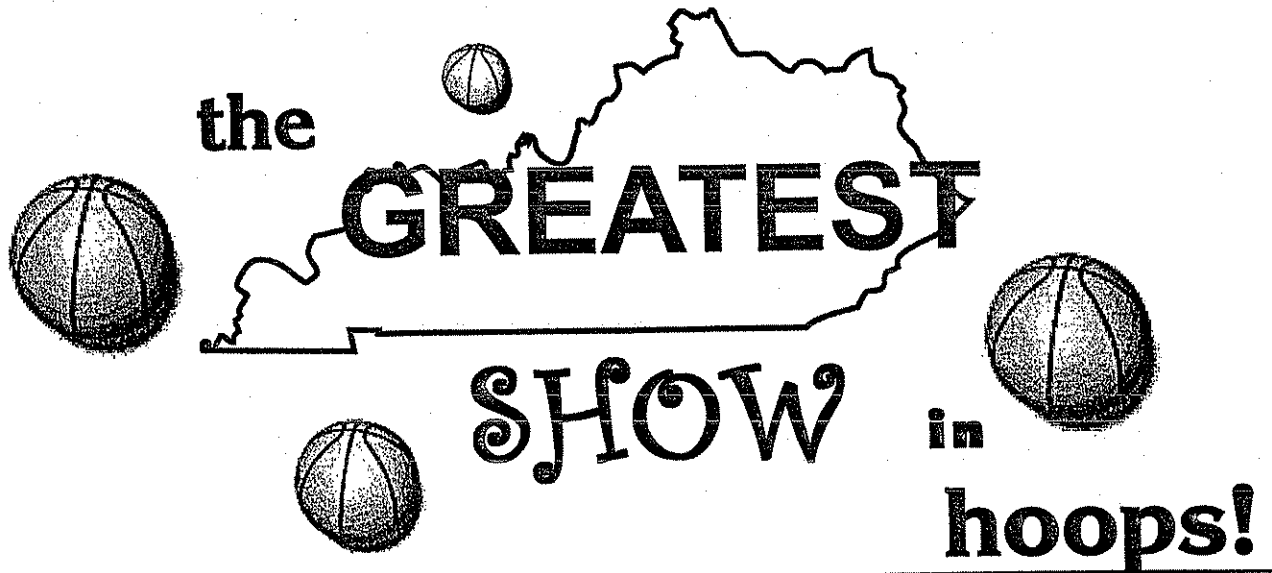
---

**2003 HOUCHENS INDUSTRIES/KHSAA  
GIRLS' SWEET SIXTEEN® STATE BASKETBALL TOURNAMENT**

---

March 26-29 • Diddle Arena • Bowling Green

---



**Thursday, March 27, 2003**

**Session 3 - Game 1**

**Mercer County Scotties**

**vs.**

**Christian County Colonels**

**FINAL GAME STATS**

**It's Showtime!**

---

**2003 Houchens Industries/KHSAA Girls' Sweet 16 - Game Box Score**  
**Mercer County Scotties vs. Christian County Colonels**  
**Date: 03/27/2003 Time: Noon CST Site: Bowling Green, KY Attendance:**

**Visitors: Christian County Colonels**

##	Name	P	FG	3 Pt	FT	PTS	ORB	DRB	TR	PF	AST	TO	BS	ST	MIN
10	Shana McCombs		0/1	0/0	0/0	0	0	0	0	2	1	1	0	0	4:43
12	* Corky Stiger		5/11	2/7	0/0	12	0	3	3	3	2	3	0	1	28:17
15	* Shaleea Petty		3/13	0/2	1/2	7	0	3	3	4	9	10	0	3	32:00
20	Kelly Wangrycht														DNP
25	Annisa Wilson		0/0	0/0	0/0	0	0	0	0	0	0	0	0	0	0:04
30	Tanika Thomas		0/0	0/0	0/0	0	0	0	0	0	0	0	0	0	0:25
31	Bridget McCombs														DNP
32	* Arnika Brown		8/17	1/1	0/0	17	7	10	17	3	10	6	1	0	32:00
34	Ashley Briggs		4/6	0/0	0/0	8	5	1	6	0	1	1	0	3	20:29
42	Jessica Shepard														DNP
45	Shermona Riley		0/1	0/0	2/2	2	1	0	1	0	0	0	0	0	2:24
54	* DeRica Jones		9/16	0/1	2/3	20	4	3	7	3	0	4	0	1	24:02
55	* Jana Betts		2/6	0/0	0/1	4	1	4	5	2	0	0	0	1	15:36
5	Tracey Howard														DNP
50	Renea Maxie														DNP
	<b>Team</b>						1	1	2						
	<b>Totals</b>		<b>31/71</b>	<b>3/11</b>	<b>5/8</b>	<b>70</b>	<b>19</b>	<b>25</b>	<b>44</b>	<b>17</b>	<b>23</b>	<b>25</b>	<b>1</b>	<b>9</b>	<b>160</b>

<b>Total FG</b>	1st Half	16/30	53.3%	2nd Half	15/41	36.6%	Game	31/71	43.7%
<b>3 PT FG</b>	1st Half	0/2	0.00%	2nd Half	3/9	33.3%	Game	3/11	27.3%
<b>Free Throws</b>	1st Half	4/7	57.1%	2nd Half	1/1	100%	Game	5/8	62.5%

**Home: Mercer County Scotties**

##	Name	P	FG	3 Pt	FT	PTS	ORB	DRB	TR	PF	AST	TO	BS	ST	MIN
00	* Ashley Webb		4/8	1/2	4/4	13	0	8	8	0	1	3	1	1	20:24
4	Crystal Claunch		3/6	1/1	2/2	9	0	2	2	0	1	4	0	0	12:31
5	* Courtney Watts		1/8	0/3	3/4	5	0	2	2	3	3	6	0	3	22:44
10	Cala Alford		3/3	0/0	0/2	6	0	0	0	2	0	0	0	0	10:06
11	Kendra Horn														DNP
14	Chelsea Goodman		2/6	0/1	2/2	6	2	0	2	1	1	3	0	2	15:29
15	Tracy McClain														DNP
20	Erica Lee		3/6	0/0	1/4	7	6	3	9	3	0	0	0	0	11:06
21	* Nina Pike		3/9	2/4	1/2	9	2	2	4	2	5	3	0	3	24:54
24	Morgan Coatney														DNP
30	Erin Ashford		0/1	0/1	0/0	0	0	0	0	0	1	1	0	1	4:15
40	* Leslye Johnson		3/10	0/5	0/0	6	0	2	2	0	1	1	0	0	20:50
50	* Jillian Horn		3/3	0/0	0/0	6	1	2	3	2	1	6	1	0	17:41
55	Natalie Blake														DNP
12	Lindsey Alford														DNP
32	Celia Newby														DNP
	<b>Team</b>						1	2	3						
	<b>Totals</b>		<b>25/60</b>	<b>4/17</b>	<b>13/20</b>	<b>67</b>	<b>12</b>	<b>23</b>	<b>35</b>	<b>13</b>	<b>14</b>	<b>27</b>	<b>2</b>	<b>10</b>	<b>160</b>

<b>Total FG</b>	1st Half	11/28	39.3%	2nd Half	14/32	43.8%	Game	25/60	41.7%
<b>3 PT FG</b>	1st Half	2/6	33.3%	2nd Half	2/11	18.2%	Game	4/17	23.5%
<b>Free Throws</b>	1st Half	5/8	62.5%	2nd Half	8/12	66.7%	Game	13/20	65.0%

	CHR	Mer		CHR	Mer		CHR	Mer
Free Throw Pts	5	13	3Pt Points	9	12	Pts/Possession	0.68	0.68
Pts off Turnovers	17	30	2nd Chance Points	13	9	Pts off Bench	10	28
Total Rebounds	44	35	Team Rebounds	2	3	Dead Ball Reb	2	4
Off Rebound %	45.2	32.4	Def Rebound %	67.6	54.8	Total Rebound %	55.7	44.3

Technical Fouls	CHR	None
	Mer	None
Officials	Brian Cook, Barry Barnes, Sherianne Shuey	

	Qtr 1	Qtr 2	Qtr 3	Qtr 4	OT 1	OT 2	OT 3	OT 4	Total
<b>Christian County Colonels</b>	18	18	13	21	0	0	0	0	<b>70</b>
<b>Mercer County Scotties</b>	14	15	22	16	0	0	0	0	<b>67</b>

2003 Houchens Industries/KHSAA Girls' Sweet 16 - Play by Play Report - Period: 1 (pg 1)

Mercer County Mercer vs. Christian County Christian

Date: 03/27/2003 Time: Noon CST Site: Bowling Green, KY Attendance:

Name	Action	Action	Score	Clock	Diff	Name	Action	Action
00 A Webb	Start Game					12 C Stiger	Start Game	
5 C Watts	Start Game					15 S Petty	Start Game	
21 N Pike	Start Game					32 A Brown	Start Game	
40 L Johnson	Start Game					54 D Jones	Start Game	
50 J Horn	Start Game					55 J Betts	Start Game	
A Webb	Jump Ball Loss			1 7:59		A Brown	Jump Ball Win	
				1 7:38		S Petty	Turnover	(Bad Pass)
N Pike	Layup Att			1 7:33		J Betts	Def Rebound	
			0-2	1 7:26	-2	D Jones	Layup Made	A Brown Assist
N Pike	Layup Att	J Horn Off Reb		1 7:19				
J Horn	Turnover	(Traveling)		1 7:15				
L Johnson	Def Rebound			1 6:58		A Brown	FG Attempt	
L Johnson	3Pt Attempt			1 6:33		S Petty	Def Rebound	
			0-4	1 6:27	-4	S Petty	Layup Made	
N Pike	3Pt Attempt			1 6:01		J Betts	Def Rebound	
				1 5:53		A Brown	FG Attempt	D Jones Off Reb
J Horn	Block	C Watts Def Reb		1 5:51		D Jones	Putback Att	
A Webb	Layup Made	N Pike Assist	2-4	1 5:43	-2			
			2-6	1 5:26	-4	J Betts	FG Made	A Brown Assist
J Horn	FG Made	A Webb Assist	4-6	1 5:08	-2			
			4-8	1 4:56	-4	A Brown	FG Made	
L Johnson	Layup Made		6-8	1 4:45	-2			
				1 4:31		D Jones	Offensive Foul	
				1 4:31		D Jones	Turnover	
A Webb	Charge Taken			1 4:31				
				1 4:31		S Riley	Enter Game	for D Jones
E Lee	Enter Game	for J Horn		1 4:31				
C Watts	Turnover	(Bad Pass)		1 4:23				
				1 4:21		J Betts	Steal	
				1 4:17		S Petty	Turnover	(Bad Pass)
N Pike	Steal			1 4:16				
A Webb	Layup Att			1 4:12		Chr	Def Rebound	(Dead Ball Reb)
E Lee	Personal Foul			1 4:11				
C Alford	Enter Game	for A Webb		1 4:07				
				1 3:52		S Petty	FG Attempt	A Brown Off Reb
			6-10	1 3:50	-4	A Brown	Putback Made	
L Johnson	3Pt Attempt	Mer Off Reb		1 3:36				
N Pike	Leave Game			1 3:34				
C Goodman	Enter Game	for L Johnson		1 3:34				
E Ashford	Enter game			1 3:34				
				1 3:34		D Jones	Enter Game	for J Betts
E Ashford	Turnover	(Bad Pass)		1 3:29				
			6-12	1 3:22	-6	A Brown	FG Made	C Stiger Assist
C Watts	Turnover	(Bad Pass)		1 2:50				
			6-14	1 2:45	-8	A Brown	Layup Made	S Petty Assist
C Watts	Layup Att			1 2:22		C Stiger	Def Rebound	
				1 2:17		S Riley	Layup Att	S Riley Off Reb
C Alford	Personal Foul			1 2:14				
C Claunch	Enter Game	for C Watts		1 2:14				
			6-15	1 2:14	-9	S Riley	FT Made	
			6-16	1 2:14	-10	S Riley	FT Made	
				1 2:14		A Briggs	Enter Game	for S Riley
				1 2:14				
				1 2:01		D Jones	Personal Foul	
				1 2:01		J Betts	Enter Game	for D Jones
C Claunch	FT Made		7-16	1 2:01	-9			
C Claunch	FT Made		8-16	1 2:01	-8			
			8-18	1 1:55	-10	A Briggs	Layup Made	A Brown Assist
E Ashford	3Pt Attempt	E Lee Off Reb		1 1:45				
C Goodman	Turnover	(Traveling)		1 1:42				
C Claunch	Def Rebound			1 1:32		A Briggs	Layup Att	

2003 Houchens Industries/KHSAA Girls' Sweet 16 - Play by Play Report - Period: 1 (pg 2)

Mercer County Mercer vs. Christian County Christian

Date: 03/27/2003 Time: Noon CST Site: Bowling Green, KY Attendance:

Name	Action	Action	Score	Clock	Diff	Name	Action	Action
C Goodman	Layup Att	E Lee Off Reb		1 1:23				
E Lee	Putback Made		10-18	1 1:20	-8			
				1 1:11		S Petty	Turnover	(Bad Pass)
C Alford	Layup Made		12-18	1 1:01	-6			
				1 0:56		S Petty	Turnover	(Bad Pass)
C Claunch	FG Attempt	E Lee Off Reb		1 0:46				
				1 0:44		A Brown	Personal Foul	
E Lee	FT Attempt	Mer Deadball Reb		1 0:44				
E Lee	FT Attempt			1 0:44		A Brown	Def Rebound	
C Claunch	Def Rebound			1 0:20		C Stiger	3Pt Attempt	
C Claunch	Turnover			1 0:17				
				1 0:17		A Briggs	Steal	
				1 0:06		C Stiger	Turnover	
E Ashford	Steal			1 0:05				
C Claunch	Layup Made	E Ashford Assist	14-18	1 0:02	-4			

End of Period Summary Mercer 14 Christian 18

Largest Lead: Mercer 6 Christian 16 (10 pts)

Lead in Period: Mercer 6 Christian 16 (10 pts)

6 for 4 oppo pts

5 for 2 pts

6/16 for 37.5 %

2/4 for 50.0 %

Turnovers

2nd Chances

Field Goals

Free Throws

Lead Changes: 0 Ties: 0

Lead Changes: 0 Ties: 0 (this period)

6 for 4 oppo pts

3 for 4 pts

8/15 for 53.3 %

2/2 for 100 %

2003 Houchens Industries/KHSAA Girls' Sweet 16 - Play by Play Report - Period: 2 (pg 1)

Mercer County Mercer vs. Christian County Christian

Date: 03/27/2003 Time: Noon CST Site: Bowling Green, KY Attendance:

Name	Action	Action	Score	Clock	Diff	Name	Action	Action
C Claunch	Leave Game			2 8:00				
C Alford	Leave Game			2 8:00				
C Goodman	Leave Game			2 8:00				
E Lee	Leave Game			2 8:00				
A Webb	Enter Game	for E Ashford		2 8:00				
C Watts	Enter game			2 8:00				
N Pike	Enter game			2 8:00				
L Johnson	Enter game			2 8:00				
J Horn	Enter game			2 8:00				
A Webb	3Pt Made	C Watts Assist	17-18	2 7:47	-1			
				2 7:46		S McCombs	Enter Game	for C Stiger
				2 7:28		A Brown	Offensive Foul	
				2 7:28		A Brown	Turnover	
A Webb	Charge Taken			2 7:28				
C Watts	Turnover			2 7:21				
				2 7:21		S Petty	Steal	
C Watts	Personal Foul			2 7:21				
			17-20	2 7:09	-3	A Briggs	FG Made	A Brown Assist
C Watts	Layup Att			2 6:50		J Betts	Def Rebound	
			17-22	2 6:40	-5	S Petty	FG Made	
C Watts	Turnover	(Bad Pass)		2 6:35				
				2 6:33		A Briggs	Steal	
C Watts	Personal Foul			2 6:30				
C Claunch	Enter Game	for C Watts		2 6:30				
N Pike	Personal Foul			2 6:29				
A Webb	Def Rebound			2 6:22		S Petty	FG Attempt	
J Horn	FG Made	N Pike Assist	19-22	2 6:01	-3			
A Webb	Def Rebound			2 5:24		A Brown	FG Attempt	
C Claunch	FG Attempt			2 5:16		A Briggs	Def Rebound	
				2 5:16		A Briggs	Turnover	(Traveling)
				2 5:16		S McCombs	Leave Game	
				2 5:16		C Stiger	Enter Game	for J Betts
				2 5:16		D Jones	Enter game	
C Claunch	3Pt Made	L Johnson Assist	22-22	2 5:13	(T1)			
				2 4:59		Chr	20 Sec Time Out	
			22-24	2 4:42	-2	D Jones	FG Made	C Stiger Assist
J Horn	Turnover	(Bad Pass)		2 4:36				
				2 4:34		A Briggs	Steal	
A Webb	Def Rebound			2 4:30		A Brown	FG Attempt	
L Johnson	FG Attempt	N Pike Off Reb		2 4:21				
N Pike	Turnover	(Bad Pass)		2 4:04				
				2 3:51		C Stiger	FG Attempt	D Jones Off Reb
J Horn	Def Rebound			2 3:49		D Jones	Putback Att	
C Claunch	FG Made	N Pike Assist	24-24	2 3:38	(T2)			
J Horn	Personal Foul			2 3:24				
A Webb	Leave Game			2 3:24				
C Goodman	Enter Game	for L Johnson		2 3:24				
E Lee	Enter game			2 3:24				
				2 3:24		J Betts	Enter Game	for A Briggs
			24-25	2 3:24	-1	D Jones	FT Made	
				2 3:24		D Jones	FT Attempt	A Brown Off Reb
			24-27	2 3:22	-3	A Brown	Putback Made	
C Goodman	Turnover	(Bad Pass)		2 3:13				
				2 3:11		S Petty	Steal	
			24-29	2 3:09	-5	C Stiger	FG Made	S Petty Assist
C Goodman	Turnover	(Double Dribble)		2 3:03				
				2 3:03		S McCombs	Enter Game	for C Stiger
				2 2:52		D Jones	Turnover	(Traveling)
				2 2:52				
				2 2:52		C Stiger	Enter Game	for J Betts
				2 2:52		A Briggs	Enter Game	for S McCombs

2003 Houchens Industries/KHSAA Girls' Sweet 16 - Play by Play Report - Period: 2 (pg 2)

Mercer County Mercer vs. Christian County Christian

Date: 03/27/2003 Time: Noon CST Site: Bowling Green, KY Attendance:

Name	Action	Action	Score	Clock	Diff	Name	Action	Action
				2 2:42		S Petty	Personal Foul	
Mer	20 Sec Time Out			2 2:34				
C Goodman	Layup Made		26-29	2 2:17	-3			
			26-31	2 1:58	-5	D Jones	Layup Made	A Brown Assist
C Claunch	Turnover	(Traveling)		2 1:47				
				2 1:47		J Betts	Enter Game	for A Briggs
				2 1:47		S McCombs	Enter Game	for D Jones
E Lee	Def Rebound			2 1:32		S McCombs	FG Attempt	
Mer	20 Sec Time Out			2 1:27				
				2 1:27		A Briggs	Enter Game	for J Betts
J Horn	Turnover	(Bad Pass)		2 1:18				
				2 1:16		C Stiger	Steal	
Mer	Def Rebound			2 1:11		S Petty	3Pt Attempt	
J Horn	Turnover	(Bad Pass)		2 1:10				
				2 1:09		S Petty	Steal	
J Horn	Personal Foul			2 1:07				
A Webb	Enter Game	for J Horn		2 1:07				
				2 1:07		S Petty	FT Attempt	Chr Deadball Reb
			26-32	2 1:07	-6	S Petty	FT Made	
C Claunch	Turnover	(Bad Pass)		2 1:03				
			26-34	2 1:01	-8	A Brown	Layup Made	S McCombs Assist
C Goodman	FG Attempt	E Lee Off Reb		2 0:49				
				2 0:47		S McCombs	Personal Foul	
				2 0:47		J Betts	Enter Game	for S McCombs
E Lee	FT Attempt	Mer Deadball Reb		2 0:47				
E Lee	FT Made		27-34	2 0:47	-7			
				2 0:47		D Jones	Enter Game	for A Briggs
				2 0:42		A Brown	Turnover	(Bad Pass)
E Lee	Layup Att	E Lee Off Reb		2 0:37				
E Lee	Putback Att			2 0:35		J Betts	Def Rebound	
E Lee	Personal Foul			2 0:34				
E Lee	Def Rebound			2 0:34		J Betts	FT Attempt	
A Webb	Layup Att			2 0:25		D Jones	Def Rebound	
			27-36	2 0:19	-9	S Petty	Layup Made	A Brown Assist
				2 0:04		J Betts	Personal Foul	
C Alford	Enter Game	for E Lee		2 0:04				
				2 0:04		A Wilson	Enter Game	for D Jones
				2 0:04		T Thomas	Enter Game	for J Betts
A Webb	FT Made		28-36	2 0:04	-8			
A Webb	FT Made		29-36	2 0:04	-7			

End of Period Summary Mercer 29 Christian 36

Largest Lead: Mercer 6 Christian 16 (10 pts)

Lead in Period: Mercer 27 Christian 36 (9 pts)

10 for 7 oppo pts  
 3 for 1 pts  
 5/12 for 41.7 %  
 3/4 for 75.0 %

Turnovers  
 2nd Chances  
 Field Goals  
 Free Throws

Lead Changes: 0 Ties: 2  
 Lead Changes: 0 Ties: 2 (this period)  
 4 for 8 oppo pts  
 2 for 2 pts  
 8/15 for 53.3 %  
 2/5 for 40.0 %

**2003 Houchens Industries/KHSAA Girls' Sweet 16 - Game Box Score**  
**Mercer County Mercer vs. Christian County Christian**  
**Date: 03/27/2003 Time: Noon CST Site: Bowling Green, KY Attendance:**

**Visitors: Christian County Christian**

##	Name	P	FG	3 Pt	FT	PTS	ORB	DRB	TR	PF	AST	TO	BS	ST	MIN
10	Shana McCombs		0/1	0/0	0/0	0	0	0	0	1	1	0	0	0	3:41
12	* Corky Stiger		1/3	0/1	0/0	2	0	1	1	0	2	1	0	1	13:19
15	* Shaleea Petty		3/6	0/1	1/2	7	0	1	1	1	2	4	0	3	16:00
20	Kelly Wangrycht														DNP
25	Annisa Wilson		0/0	0/0	0/0	0	0	0	0	0	0	0	0	0	0:04
30	Tanika Thomas		0/0	0/0	0/0	0	0	0	0	0	0	0	0	0	0:04
31	Bridget McCombs														DNP
32	* Arnika Brown		6/10	0/0	0/0	12	2	1	3	2	6	2	0	0	16:00
34	Ashley Briggs		2/3	0/0	0/0	4	0	1	1	0	0	1	0	3	8:35
42	Jessica Shepard														DNP
45	Shermona Riley		0/1	0/0	2/2	2	1	0	1	0	0	0	0	0	2:17
54	* DeRica Jones		3/5	0/0	1/2	7	2	1	3	2	0	2	0	0	9:14
55	* Jana Betts		1/1	0/0	0/1	2	0	4	4	1	0	0	0	1	10:46
5	Tracey Howard														DNP
50	Renea Maxle														DNP
	<b>Team</b>						0	0	0						
	<b>Totals</b>		<b>16/30</b>	<b>0/2</b>	<b>4/7</b>	<b>36</b>	<b>5</b>	<b>9</b>	<b>14</b>	<b>7</b>	<b>11</b>	<b>10</b>	<b>0</b>	<b>8</b>	<b>80</b>

<b>Total FG</b>	1st Half	16/30	53.3%	2nd Half	0/0	0.00%	Game	16/30	53.3%
<b>3 PT FG</b>	1st Half	0/2	0.00%	2nd Half	0/0	0.00%	Game	0/2	0.00%
<b>Free Throws</b>	1st Half	4/7	57.1%	2nd Half	0/0	0.00%	Game	4/7	57.1%

**Home: Mercer County Mercer**

##	Name	P	FG	3 Pt	FT	PTS	ORB	DRB	TR	PF	AST	TO	BS	ST	MIN
00	* Ashley Webb		2/4	1/1	2/2	7	0	3	3	0	1	0	0	0	9:36
4	Crystal Claunch		3/5	1/1	2/2	9	0	2	2	0	0	3	0	0	8:44
5	* Courtney Watts		0/2	0/0	0/0	0	0	1	1	2	1	4	0	0	7:16
10	Cala Alford		1/1	0/0	0/0	2	0	0	0	1	0	0	0	0	4:11
11	Kendra Horn														DNP
14	Chelsea Goodman		1/3	0/0	0/0	2	0	0	0	0	0	3	0	0	6:58
15	Tracy McClain														DNP
20	Erica Lee		1/3	0/0	1/4	3	5	2	7	2	0	0	0	0	7:51
21	* Nina Pike		0/3	0/1	0/0	0	1	0	1	1	3	1	0	1	12:26
24	Morgan Coatney														DNP
30	Erin Ashford		0/1	0/1	0/0	0	0	0	0	0	1	1	0	1	3:34
40	* Leslye Johnson		1/4	0/2	0/0	2	0	1	1	0	1	0	0	0	9:02
50	* Jillian Horn		2/2	0/0	0/0	4	1	1	2	2	0	4	1	0	10:22
55	Natalie Blake														DNP
12	Lindsey Alford														DNP
32	Celia Newby														DNP
	<b>Team</b>						1	1	2						
	<b>Totals</b>		<b>11/28</b>	<b>2/6</b>	<b>5/8</b>	<b>29</b>	<b>8</b>	<b>11</b>	<b>19</b>	<b>8</b>	<b>7</b>	<b>16</b>	<b>1</b>	<b>2</b>	<b>80</b>

<b>Total FG</b>	1st Half	11/28	39.3%	2nd Half	0/0	0.00%	Game	11/28	39.3%
<b>3 PT FG</b>	1st Half	2/6	33.3%	2nd Half	0/0	0.00%	Game	2/6	33.3%
<b>Free Throws</b>	1st Half	5/8	62.5%	2nd Half	0/0	0.00%	Game	5/8	62.5%

	Chr	Mer		Chr	Mer		Chr	Mer
Free Throw Pts	4	5	3Pt Points	0	6	Pts/Possession	0.78	0.58
Pts off Turnovers	11	12	2nd Chance Points	6	3	Pts off Bench	6	16
Total Rebounds	14	19	Team Rebounds	0	2	Dead Ball Reb	2	2
Off Rebound %	31.3	47.1	Def Rebound %	52.9	68.8	Total Rebound %	42.4	57.6

Technical Fouls: Chr None, Mer None  
 Officials: Brian Cook, Barry Barnes, Sherianne Shuey

	Qtr 1	Qtr 2	Qtr 3	Qtr 4	OT 1	OT 2	OT 3	OT 4	Total
<b>Christian County Christian</b>	18	18	0	0	0	0	0	0	36
<b>Mercer County Mercer</b>	14	15	0	0	0	0	0	0	29

2003 Houchens Industries/KHSAA Girls' Sweet 16 - Play by Play Report - Period: 3 (pg 1)

Mercer County Mercer vs. Christian County Christian

Date: 03/27/2003 Time: Noon CST Site: Bowling Green, KY Attendance:

Name	Action	Action	Score	Clock	Diff	Name	Action	Action
				3 8:00		C Stiger	Leave Game	
				3 8:00		S Petty	Leave Game	
				3 8:00		A Wilson	Leave Game	
				3 8:00		T Thomas	Leave Game	
				3 8:00		A Brown	Leave Game	
A Webb	Leave Game			3 8:00				
C Claunch	Leave Game			3 8:00				
C Alford	Leave Game			3 8:00				
C Goodman	Leave Game			3 8:00				
A Webb	Enter Game	for N Pike		3 8:00				
C Watts	Enter game			3 8:00				
N Pike	Enter game			3 8:00				
L Johnson	Enter game			3 8:00				
J Horn	Enter game			3 8:00				
				3 8:00		C Stiger	Enter game	
				3 8:00		S Petty	Enter game	
				3 8:00		A Brown	Enter game	
				3 8:00		D Jones	Enter game	
				3 8:00		J Betts	Enter game	
				3 7:50		S Petty	Personal Foul	
C Watts	FT Attempt	Mer Deadball Reb		3 7:50				
C Watts	FT Made		30-36	3 7:50	-6			
				3 7:45		S Petty	Turnover	
C Watts	Steal			3 7:45				
C Watts	Layup Att			3 7:43		A Brown	Def Rebound	
				3 7:38		D Jones	FG Attempt	A Brown Off Reb
L Johnson	Def Rebound			3 7:23		C Stiger	3Pt Attempt	
L Johnson	3Pt Attempt			3 7:02		A Brown	Block	A Brown Def Reb
			30-38	3 6:51	-8	D Jones	FG Made	S Petty Assist
C Watts	Layup Made		32-38	3 6:42	-6			
				3 6:35		Chr	20 Sec Time Out	
				3 6:27		J Betts	FG Attempt	J Betts Off Reb
			32-41	3 6:20	-9	A Brown	3Pt Made	S Petty Assist
L Johnson	FG Attempt			3 6:08		A Brown	Def Rebound	
			32-43	3 6:00	-11	J Betts	Layup Made	A Brown Assist
C Watts	3Pt Attempt			3 5:47		Chr	Def Rebound	
				3 5:20		A Brown	Turnover	(Bad Pass)
A Webb	Steal			3 5:18				
J Horn	Layup Made	C Watts Assist	34-43	3 5:11	-9			
				3 4:59		J Betts	Layup Att	D Jones Off Reb
J Horn	Def Rebound			3 4:58		D Jones	Putback Att	
A Webb	Layup Made	J Horn Assist	36-43	3 4:47	-7			
A Webb	Def Rebound			3 4:36		A Brown	FG Attempt	
N Pike	3Pt Made		39-43	3 4:27	-4			
				3 4:22		S Petty	Turnover	(Traveling)
				3 4:22		A Briggs	Enter Game	for J Betts
				3 4:22		Chr	Time Out	
N Pike	Layup Made		41-43	3 4:11	-2			
				3 4:07		C Stiger	Turnover	(Fumble)
N Pike	Steal			3 4:07				
A Webb	FG Attempt			3 4:07		S Petty	Def Rebound	
				3 3:57		C Stiger	Offensive Foul	
				3 3:57		C Stiger	Turnover	
A Webb	Charge Taken			3 3:57				
L Johnson	Layup Made	N Pike Assist	43-43	3 3:47	(T3)			
				3 3:32		A Brown	Turnover	(Traveling)
C Goodman	Enter Game	for N Pike		3 3:32				
J Horn	Turnover	(Fumble)		3 3:20				
			43-45	3 3:14	-2	A Briggs	Layup Made	A Brown Assist
L Johnson	FG Made	C Goodman Assist	45-45	3 3:03	(T4)			
			45-47	3 2:52	-2	A Briggs	Layup Made	S Petty Assist



2003 Houchens Industries/KHSAA Girls' Sweet 16 - Play by Play Report - Period: 3 (pg 2)  
 Mercer County Mercer vs. Christian County Christian  
 Date: 03/27/2003 Time: Noon CST Site: Bowling Green, KY Attendance:

Name	Action	Action	Score	Clock	Diff	Name	Action	Action
				3 2:41				
				3 2:41		J Betts	Enter Game	for D Jones
J Horn	Turnover	(Traveling)		3 2:32				
				3 2:21		J Betts	FG Attempt	A Briggs Off Reb
A Webb	Def Rebound			3 2:13		S Petty	FG Attempt	
A Webb	Turnover	(Traveling)		3 2:08				
				3 2:08		D Jones	Enter Game	for J Betts
C Watts	Def Rebound			3 2:00		A Brown	FG Attempt	
C Goodman	3Pt Attempt			3 1:50		C Stiger	Def Rebound	
				3 1:43		S Petty	FG Attempt	A Brown Off Reb
			45-49	3 1:41	-4	A Brown	Putback Made	
C Watts	Turnover	(Traveling)		3 1:34				
				3 1:34		S McCombs	Enter Game	for C Stiger
A Webb	Def Rebound			3 1:20		D Jones	FG Attempt	
				3 1:19		D Jones	Personal Foul	
C Watts	Turnover	(Bad Pass)		3 1:14				
				3 1:09		A Brown	Turnover	
A Webb	3Pt Attempt	C Goodman Off Reb		3 0:58				
				3 0:41		S Petty	Personal Foul	
A Webb	Leave Game			3 0:41				
L Johnson	Leave Game			3 0:41				
C Alford	Enter Game	for J Horn		3 0:41				
E Lee	Enter game			3 0:41				
E Ashford	Enter game			3 0:41				
C Watts	FT Made		46-49	3 0:41	-3			
C Watts	FT Made		47-49	3 0:41	-2			
				3 0:32		S McCombs	Turnover	
C Watts	Steal			3 0:32				
C Alford	FG Made		49-49	3 0:32	(T5)			
				3 0:32		S McCombs	Personal Foul	
C Claunch	Enter Game	for C Watts		3 0:32				
				3 0:32		C Stiger	Enter Game	for S McCombs
C Alford	FT Attempt			3 0:32		A Brown	Def Rebound	
				3 0:23		D Jones	Turnover	(Traveling)
C Claunch	FG Attempt	E Lee Off Reb		3 0:08				
E Lee	Putback Made		51-49	3 0:07	+2 (L1)			
				3 0:01		D Jones	3Pt Attempt	Chr Off Reb

**End of Period Summary Mercer 51 Christian 49**

Largest Lead: Mercer 32 Christian 43 (11 pts)  
 Lead in Period: Mercer 32 Christian 43 (11 pts)

5 for 2 oppo pts  
 2 for 4 pts  
 9/17 for 52.9 %  
 3/5 for 60.0 %

Turnovers  
 2nd Chances  
 Field Goals  
 Free Throws

Lead Changes: 1 Ties: 5  
 Lead Changes: 1 Ties: 3 (this period)  
 9 for 12 oppo pts  
 6 for 5 pts  
 6/18 for 33.3 %  
 0/0 for 0.00 %

2003 Houchens Industries/KHSAA Girls' Sweet 16 - Play by Play Report - Period: 4 (pg 1)  
 Mercer County Scotties vs. Christian County Colonels  
 Date: 03/27/2003 Time: Noon CST Site: Bowling Green, KY Attendance:

Name	Action	Action	Score	Clock	Diff	Name	Action	Action
C Watts	Enter Game	for C Goodman		4 8:00				
N Pike	Enter Game	for E Ashford		4 8:00				
Mer	Def Rebound			4 7:34		S Petty	FG Attempt	
N Pike	Turnover	(Bad Pass)		4 7:21				
				4 7:19		D Jones	Steal	
				4 7:10		S Petty	3Pt Attempt	A Briggs Off Reb
				4 7:06		S Petty	FG Attempt	
E Lee	Def Rebound			4 6:55	+4			
C Alford	Layup Made	C Claunch Assist	53-49	4 6:54		A Brown	Personal Foul	
				4 6:54		A Brown	Def Rebound	
C Alford	FT Attempt			4 6:52		A Brown	Turnover	
				4 6:51				
N Pike	Steal			4 6:34	+6			
E Lee	Layup Made	C Watts Assist	55-49	4 6:18	+3	C Stiger	3Pt Made	S Petty Assist
			55-52	4 6:01		D Jones	Def Rebound	
E Lee	FG Attempt			4 5:53	(T6)	C Stiger	3Pt Made	S Petty Assist
			55-55	4 5:39		A Brown	Def Rebound	
N Pike	FG Attempt			4 5:37				
C Alford	Personal Foul			4 5:26	-2 (L2)	D Jones	FG Made	S Petty Assist
			55-57	4 5:26				
E Lee	Personal Foul			4 5:26				
A Webb	Enter Game	for E Lee		4 5:26		D Jones	FT Made	
			55-58	4 5:26	-3	J Betts	Enter Game	for D Jones
				4 5:12		S Petty	Def Rebound	
N Pike	3Pt Attempt			4 5:04		C Stiger	3Pt Attempt	
N Pike	Def Rebound			4 4:59				
C Claunch	Turnover	(Bad Pass)		4 4:59				
L Johnson	Enter Game	for C Alford		4 4:59				
C Goodman	Enter Game	for C Claunch		4 4:48		J Betts	FG Attempt	
A Webb	Def Rebound			4 4:47		J Betts	Personal Foul	
				4 4:47		D Jones	Enter Game	for J Betts
			56-58	4 4:47	-2			
A Webb	FT Made			4 4:36				
A Webb	FT Made			4 4:36	-1	C Stiger	3Pt Attempt	D Jones Off Reb
			57-60	4 4:34	-3	D Jones	Putback Made	
A Webb	Turnover	(Bad Pass)		4 4:19				
				4 4:05		S Petty	FG Attempt	A Brown Off Reb
				4 4:04		A Brown	Putback Att	A Briggs Off Reb
A Webb	Block			4 4:02		A Briggs	Putback Att	A Brown Off Reb
				4 4:00		A Brown	Putback Att	A Briggs Off Reb
				4 4:00				
C Watts	Personal Foul			4 3:57		S Petty	Offensive Foul	
				4 3:57		S Petty	Turnover	
				4 3:57				
A Webb	Charge Taken			4 3:46	-1			
A Webb	Layup Made	N Pike Assist	59-60	4 3:39		CHR	Time Out	
				4 3:37		S Petty	Turnover	(Bad Pass)
				4 3:35				
C Watts	Steal			4 3:12				
L Johnson	3Pt Attempt			4 3:12				
Mer	Def Rebound	(Dead Ball Reb)		4 3:11				
L Johnson	Turnover	(Bad Pass)		4 3:07		D Jones	Layup Att	A Brown Off Reb
				4 3:05		A Brown	Putback Att	
A Webb	Def Rebound			4 3:00				
				4 3:00				
A Webb	Turnover	(Bad Pass)		4 2:43	-3	C Stiger	FG Made	
			59-62	4 2:38		C Stiger	Personal Foul	
				4 2:38				
C Alford	Enter Game	for L Johnson		4 2:38	-2			
N Pike	FT Made		60-62	4 2:38		D Jones	Def Rebound	
N Pike	FT Attempt			4 2:31		S Petty	FG Attempt	A Briggs Off Reb

2003 Houchens Industries/KHSAA Girls' Sweet 16 - Play by Play Report - Period: 4 (pg 2)

Mercer County Scotties vs. Christian County Colonels

Date: 03/27/2003 Time: Noon CST Site: Bowling Green, KY Attendance:

Name	Action	Action	Score	Clock	Diff	Name	Action	Action
				4 2:24		D Jones	Turnover	(Bad Pass)
				4 2:22				
L Johnson	Enter Game	for C Alford		4 2:22				
Mer	Time Out			4 2:22				
L Johnson	3Pt Attempt			4 2:05		A Brown	Def Rebound	
			60-64	4 1:58	-4	D Jones	Layup Made	S Petty Assist
C Alford	Enter Game	for A Webb		4 1:57				
C Watts	FG Attempt	N Pike Off Reb		4 1:35				
N Pike	Putback Att			4 1:33		A Brown	Def Rebound	
			60-66	4 1:19	-6	D Jones	Layup Made	A Briggs Assist
C Goodman	FG Attempt			4 1:10		A Brown	Def Rebound	
			60-68	4 1:03	-8	D Jones	Layup Made	A Brown Assist
N Pike	Turnover	(Bad Pass)		4 0:45				
			60-70	4 0:39	-10	C Stiger	FG Made	A Brown Assist
N Pike	3Pt Made		63-70	4 0:28	-7			
Mer	Time Out			4 0:28				
				4 0:28		T Thomas	Enter Game	for A Briggs
N Pike	Def Rebound			4 0:18		C Stiger	3Pt Attempt	
				4 0:14		C Stiger	Personal Foul	
C Claunch	Enter Game	for L Johnson		4 0:14				
C Goodman	FT Made		64-70	4 0:14	-6			
C Goodman	FT Made		65-70	4 0:14	-5			
				4 0:14		CHR	Time Out	
				4 0:13		S Petty	Turnover	
C Goodman	Steal			4 0:13				
C Watts	3Pt Attempt			4 0:11		C Stiger	Def Rebound	
N Pike	Personal Foul			4 0:10				
C Goodman	Personal Foul			4 0:07				
				4 0:07		S Riley	Enter Game	for T Thomas
				4 0:05		S Petty	Turnover	
				4 0:04				
C Goodman	Steal			4 0:02				
C Watts	3Pt Attempt	C Goodman Off Reb		4 0:02				
C Goodman	Putback Made		67-70	4 0:01	-3			

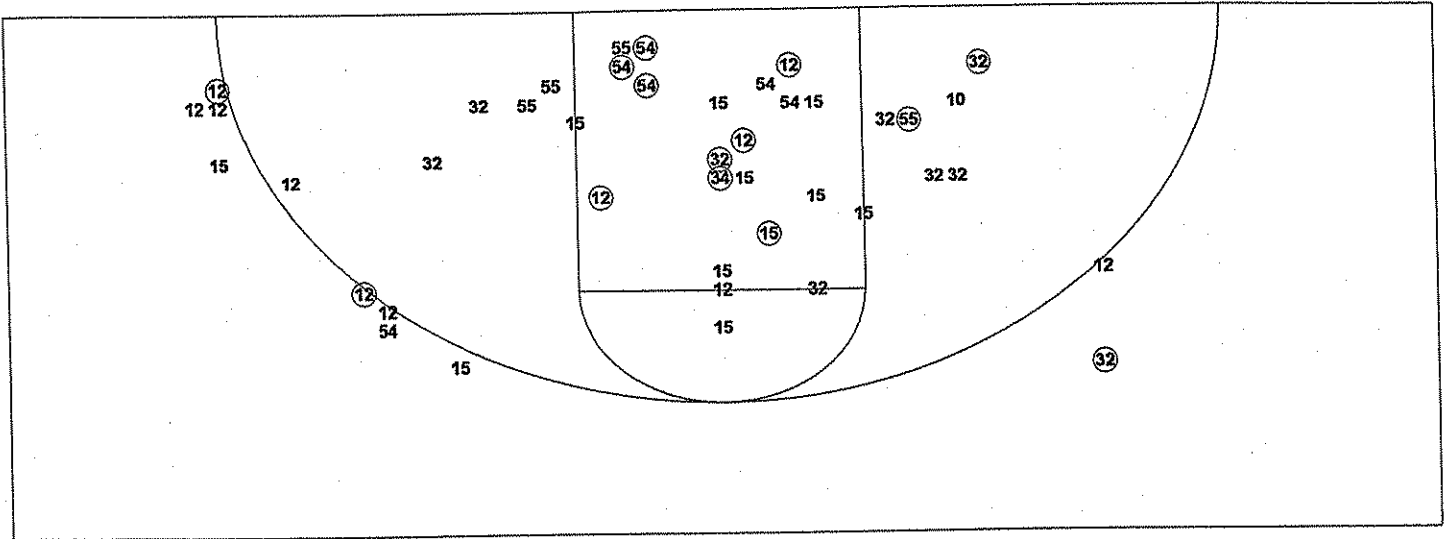
End of Period Summary Scotties 67 Colonels 70

Largest Lead: Scotties 32 Colonels 43 (11 pts)  
 Lead in Period: Scotties 60 Colonels 70 (10 pts)  
 6 for 4 oppo pts  
 2 for 2 pts  
 5/15 for 33.3 %  
 5/7 for 71.4 %

Turnovers  
 2nd Chances  
 Field Goals  
 Free Throws

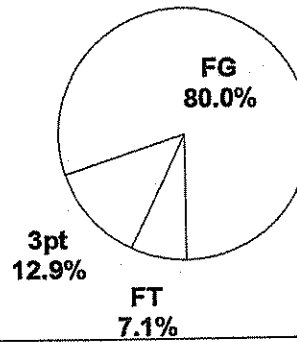
Lead Changes: 2 Ties: 6  
 Lead Changes: 1 Ties: 1 (this period)  
 6 for 6 oppo pts  
 8 for 2 pts  
 9/23 for 39.1 %  
 1/1 for 100 %

**2003 Houchens Industries/KHSAA Girls' Sweet 16 - TEAM SHOT CHART for the Christian County Colonels**  
**Mercer County Scotties vs. Christian County Colonels**  
**DATE: 03/27/2003 TIME: Noon CST SITE: Bowling Green, KY**

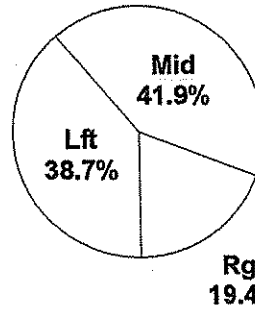


Shot Summary	M/A	%	PTS
<b>3Pt FG</b>	<b>3/11</b>	<b>27.3%</b>	<b>9</b>
<b>2Pt FG</b>	<b>28/60</b>	<b>46.7%</b>	<b>56</b>
Layups - L	10/13	76.9%	20
Layups - R	3/4	75.0%	6
Dunks	0/0	0.0%	0
Putbacks	4/11	36.4%	8
<b>Overall Shooting</b>	<b>31/71</b>	<b>43.7%</b>	<b>65</b>
Free Throws	5/8	62.5%	5
<b>Total Points</b>			<b>70</b>

**Scoring Distribution**

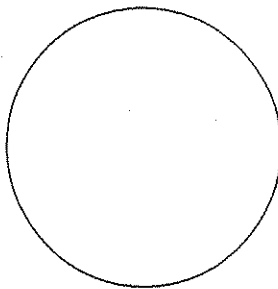


**Scoring Locations**

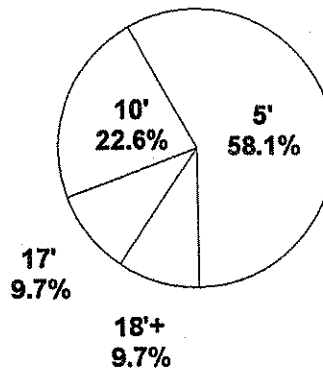


By Period	FG	FGA	FG%	3Pt	3PA	3P%	FT	FTA	FT%	PTS	ORB	DRB	TR	PF	AST	TO	BS	ST	P/S
1st Period	8	15	53.3	0	1	0.00	2	2	100	18	3	5	8	3	5	6	0	2	1.13
2nd Period	8	15	53.3	0	1	0.00	2	5	40.0	18	2	4	6	4	6	4	0	6	1.06
3rd Period	6	18	33.3	1	3	33.3	0	0	0.00	13	6	7	13	5	5	9	1	0	0.72
4th Period	9	23	39.1	2	6	33.3	1	1	100	21	8	9	17	5	7	6	0	1	0.91
<b>Game</b>	<b>31</b>	<b>71</b>	<b>43.7</b>	<b>3</b>	<b>11</b>	<b>27.3</b>	<b>5</b>	<b>8</b>	<b>62.5</b>	<b>70</b>	<b>19</b>	<b>25</b>	<b>44</b>	<b>17</b>	<b>23</b>	<b>25</b>	<b>1</b>	<b>9</b>	<b>0.93</b>

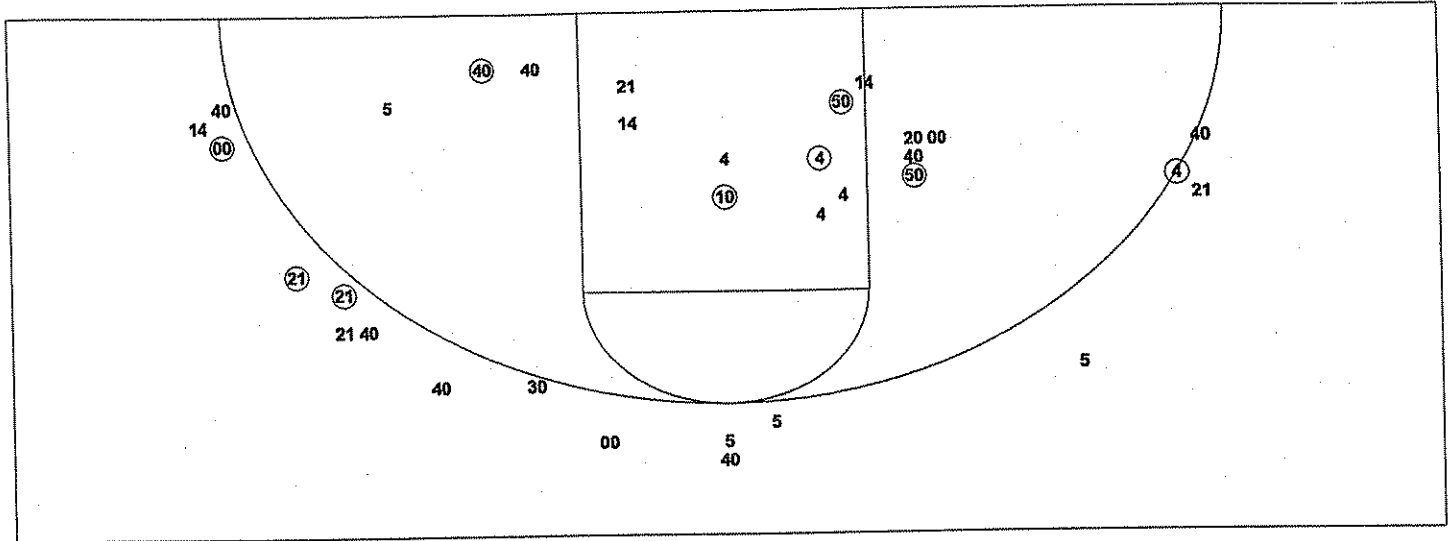
**Scoring Breakdown**



**Scoring Range**

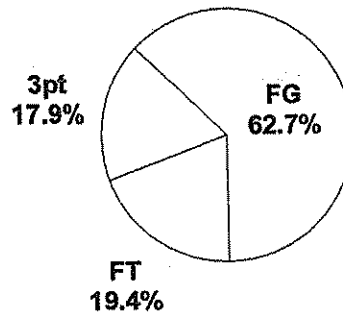


2003 Houchens Industries/KHSAA Girls' Sweet 16 - TEAM SHOT CHART for the Mercer County Scotties  
 Mercer County Scotties vs. Christian County Colonels  
 DATE: 03/27/2003 TIME: Noon CST SITE: Bowling Green, KY

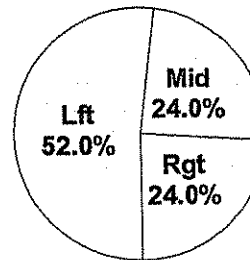


Shot Summary	M/A	%	PTS
3Pt FG	4/17	23.5%	12
2Pt FG	21/43	48.8%	42
Layups - L	9/11	81.8%	18
Layups - R	4/11	36.4%	8
Dunks	0/0	0.0%	0
Putbacks	3/5	60.0%	6
Overall Shooting	25/60	41.7%	54
Free Throws	13/20	65.0%	13
Total Points			67

Scoring Distribution

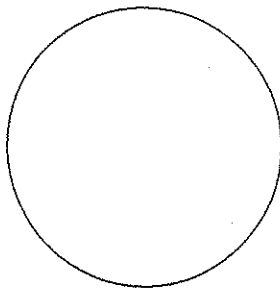


Scoring Locations



By Period	FG	FGA	FG%	3Pt	3PA	3P%	FT	FTA	FT%	PTS	ORB	DRB	TR	PF	AST	TO	BS	ST	P/S
1st Period	6	16	37.5	0	4	0.00	2	4	50.0	14	5	4	9	2	3	6	1	2	0.78
2nd Period	5	12	41.7	2	2	100	3	4	75.0	15	3	7	10	6	4	10	0	0	1.07
3rd Period	9	17	52.9	1	5	20.0	3	5	60.0	22	2	6	8	0	4	5	0	4	1.16
4th Period	5	15	33.3	1	6	16.7	5	7	71.4	16	2	6	8	5	3	6	1	4	0.89
Game	25	60	41.7	4	17	23.5	13	20	65.0	67	12	23	35	13	14	27	2	10	0.96

Scoring Breakdown



Scoring Range

